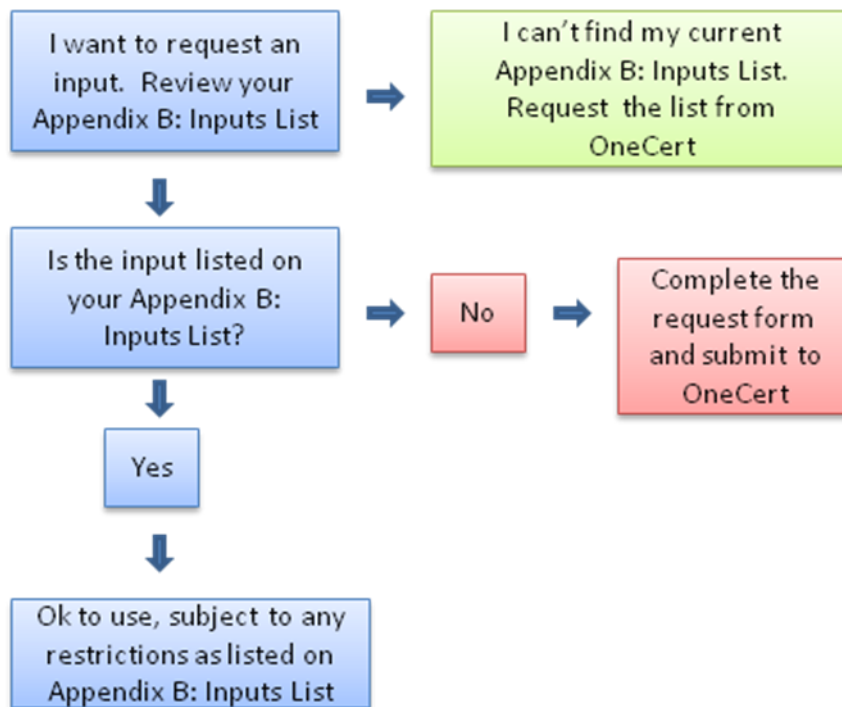


Input Request Form



Input Request Instructions:

1. Fill out the request form completely. Be sure to write the complete name of the product, as many products have similar names. List your requests in order of priority for OneCert evaluation.
2. Include supporting documentation, like SDS, the front and back labels, and soil tests*. If the product is listed as approved for use in organic production by OMRI or WSDA¹, it is helpful to submit documents stating the approval.
* Requests for synthetic micronutrient use must be accompanied by a current soil test
3. Submit the request form and supporting documents by email, fax, or mail. Inputs will not be reviewed without supporting documentation.
4. Expect at least 10 business days for a response with the exception of urgent requests².
5. Once the input has been evaluated, you will be notified and sent an Input Evaluation Form and an updated Appendix B:

Each input must be evaluated and approved for your OSP prior to use. OMRI and WSDA listed products can be readily evaluated by OneCert. However, you are not limited to requesting products only on these listings.

Your certification fee includes the cost of three evaluations for complex products that require additional resources and expertise to determine compliance. After the third evaluation, OneCert will charge a \$50 fee per evaluation. You will be notified prior to the review if a fee needs to be paid (unless an unapproved input is discovered at inspection).

¹OMRI (Organic Materials Review Institute) and WSDA (Washington State Department of Agriculture)

²If you have a critical pest or disease situation that requires immediate treatment please contact the OneCert office by phone.

Input Request Form

Operation Name: _____

Date: _____

**All materials/inputs must be approved by OneCert before use, even ones listed by OMRI or WSDA.
Once evaluated, the input will then be listed on your Appendix B: Inputs List by OneCert.
Including a copy of the label will help you to receive your evaluation more quickly.**

Types of Materials		
Crop	Livestock	Handling / Processing
Seed Treatment, Inoculants, or Coatings	Feed	Processing Aids and Solvents
Fertility or Soil Amendments	Feed Additive or Supplement	Sanitizers and Cleansers
Pest, Weed, or Disease Control	Health Care Product	Facility Pest Control Product
Crop Production Aid	Sanitizer or Facility Pest Control Product	Solvents
Post Harvest Handling or Storage Input	Feed Storage Inoculants	Ingredients

Brand Name and Manufacturer's Name as listed on the label (submit label with form)	Please specify the type as listed in the table above. It is essential that we know how the product is being used.	Where will you use it?
1.		
2.		
3.		
4.		